



# ESSENTIAL III BLUETOOTH

The high fidelity streaming turntable

MSRP 399 € (incl. VAT)

- Belt drive with synchronous motor and silicone belt
- Wireless Bluetooth output!
- Diamond cut aluminium drive pulley
- Chassis & platter made of resonance in-sensitive MDF
- Integrated DC-powered motor control minimizes motor vibration and guarantees speed stability
- Low tolerance platter bearing with stainless steel spindle
- 8,6" aluminium tonearm with sapphire bearings
- Ortofon OM10 cartridge pre-mounted
- High-quality semi-balanced Connect it E phono interconnect with gold-plated RCA connectors included
- Special decoupling feet
- Dust cover included

High gloss color options:   

**Speed:** 33, 45 (manual speed change)  
**Drive principle:** belt drive  
**Wow and flutter:** 33: 0,21% 45: 0,19%  
**Speed variance:** 33: 0,70% 45: 0,60%  
**Platter:** 300mm MDF  
**Main platter bearing spindle:** stainless steel  
**Tonearm:** 8,6", aluminium  
**Effective arm length:** 218,5 mm  
**Overhang:** 22,0mm  
**Effective tonearm mass:** 8,0 gr  
**Suitable cartridge mass:** 3 - 5,5g  
**Tracking force:** 0 - 25mn (recommended for OM10 18mn)  
**Included accessory:** power supply, dust cover, felt mat  
**Power consumption:** 4,5 watts max  
**Dimensions (lid closed):** 415 x 112 x 335mm (WxHxD)  
**Dimensions (lid open, 90°):** 415 x 365 x 390mm (WxHxD)  
**Weight:** 5,0 kg net



HG piano



HG red



HG white

## Essential III Bluetooth - a modern high fidelity streaming turntable!

Essential III Bluetooth is more than just a turntable with Bluetooth output. Wireless datastreams will be sent to any capable device in its 10m range. This turntable is for the modern audiophile who wants to combine the liberty of taking his music around wherever he wants to. The sound of your favourite tracks can be sent to your Bluetooth headphones, speakers or Bluetooth enabled DAC.

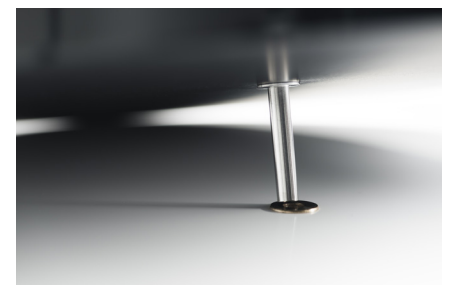
Equipped with the high-quality pickup OM10 by the phonographic cartridge pioneer Ortofon, Essential III Bluetooth delivers lively, balanced and highly involving sound that will delight every vinyl lover. For the ease of use Essential III Bluetooth features two different analogue outputs (Phono out, Line Out) as well as aptX Bluetooth!



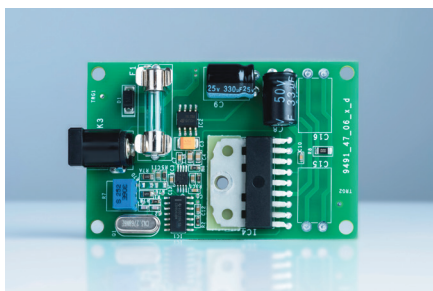
One piece 8.6" aluminum tonearm  
Cartridge: Ortofon OM10



Diamond-cut aluminum drive pulley:  
precise power transmission



Main platter bearing with low tolerances:  
reduced rumble, reduced wow & flutter



Built-in DC-powered motor control: better  
speed stability with minimized speed drift



Dust cover, felt mat and high quality  
connection cable Connect-it E included



Switchable line or phono output and built-in  
Bluetooth transmitter