

Professional Power Amplifier

QD4240/4480/4960



PROFESSIONAL POWER AMPLIFIER



Overview

The QD-4240/4480/4960 are four-channel amplifiers capable of driving 4Ω loads. Their clean sound quality makes them ideal for permanent installation in professional PA systems or for portable use for live performances. Inputs are XLR/TRS “Combo” connectors; outputs are via rugged five-way binding post connectors. Clip-limiters are supplied on each channel to help prevent distortion due to excessive signal levels. All units have soft-start protection circuitry and feature power, signal, protection, and clip indicators on the front panel. For added versatility, they may be operated in stereo, dual mono or bridged mono mode. The quad series amplifiers are powered by 100–120VAC or 220–240VAC 50/60Hz (depending on country requirements) and are packaged in 3.5” (2RU) high rack mount enclosures.

FEATURES

FOUR CHANNEL AMPLIFIER

Four channels in a single chassis.

SLIM DESIGN, COMPACT SIZE

Streamlined design fits in a compact 2RU space.

ADVANCED PROTECTION CIRCUITRY

Thermal overload protection, DC detection circuitry and power-on delay help protect your amplifier and system components.

INTEGRATED CROSSOVER

The QX-4960 features a built-in crossover for easy and convenient system integration.

BRIDGED MONO OPERATION

Can operate in monaural mode for high-power and performance.

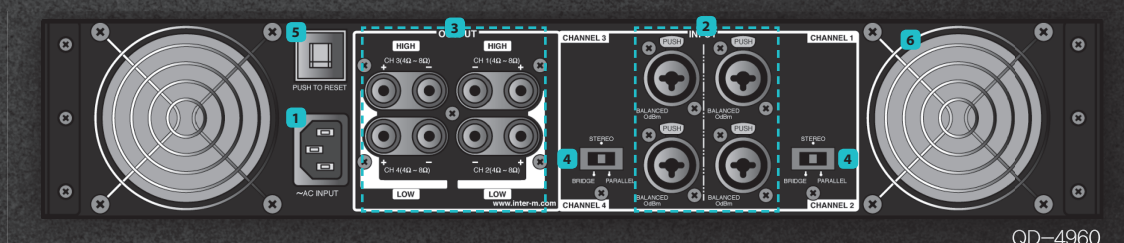
Front Panel



- 1 PROTECTION INDICATOR
- 2 CLIP INDICATORS
- 3 SIGNAL INDICATORS

- 4 HANDLES
- 5 INPUT ATTENUATORS
- 6 POWER SWITCH

Rear Panel



- 1 AC POWER INPUT
- 2 AUDIO INPUTS 1-4
- 3 SPEAKER OUTPUT TERMINALS

- 4 MODE SELECTOR
- 5 CIRCUIT BREAKER
- 6 FAN VENTS

Specifications

		QD4240	QD4480	QD4960
Power Output Level f=1kHz, THD+N≤0.05% (Typical)	QUAD RL=8Ω	40W	80W	170W
	QUAD RL=4Ω	60W	120W	240W
	BRIDGED STEREO RL=8Ω	120W	240W	480W
One Channel Driven f=1kHz THD+N≤0.05% RL=4Ω		60W	120W	240W
Frequency Response RL=8Ω, P=1W		20Hz~50kHz (±0.5dB)		
Total Harmonic Distortion (THD+N) f=20Hz~20kHz, Half Power	QUAD RL=8Ω	≤ 0.05%		
	QUAD RL=4Ω	≤ 0.07%		
	BRIDGED STEREO RL=8Ω	≤ 0.07%		
Channel Separation Half Power RL=8Ω, f=1kHz, ATT. max. Input 600Ω shunt		≥ 80dB		
Signal-to-Noise Ratio DINAudio, Input 600Ω Shunt		≥ 100dB		
Input Impedance (ATT max.)		20kΩ (Balance/Unbalance)		
Power Source		100–120VAC or 220–240VAC; 50/60Hz (Supplied AC mains transformer depends on country requirements)		
Power Consumption (1/8 Power)		300W	400W	770W
Weight		11.5kg/25.3lb	15.5kg/34.2lb	17kg/37.5lb
Dimensions (W x H x D)		482 x 88 x 369mm/19 x 3.5 x 14.5in		

Inter-M Corp. (IMK)

719, Dobong-ro, Dobong-gu, Seoul, Korea
Overseas Sales Team

Tel_ +82-2-2289-8141~7 Fax_ +82-2-2289-8149 E-mail_ overseas@inter-m.com

www.inter-m.com

※ Design and specification are subject to be changed for the improvement of product quality without pre notice.

2015. 6. V1

