

# EVOX J MIX8



## Firmware Update Guide

Two separate steps are required to perform a firmware update of the EVOX JMix8 loudspeaker:

- update application installation
- Firmware update operation

Please follow the instructions below, depending on your host operating system.

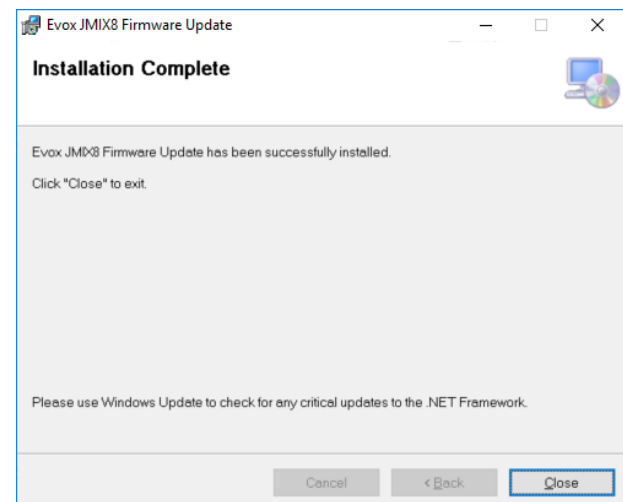
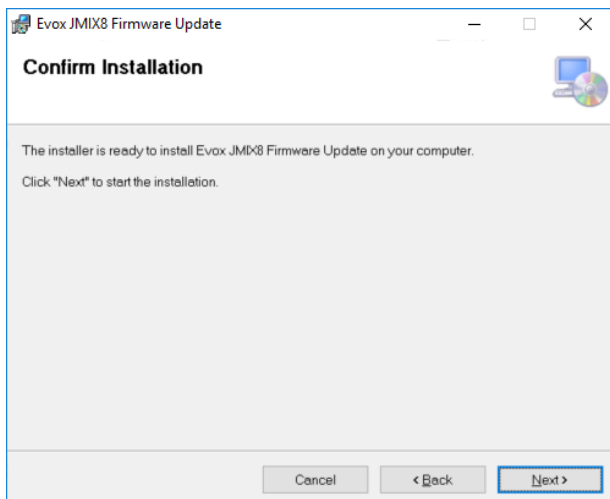
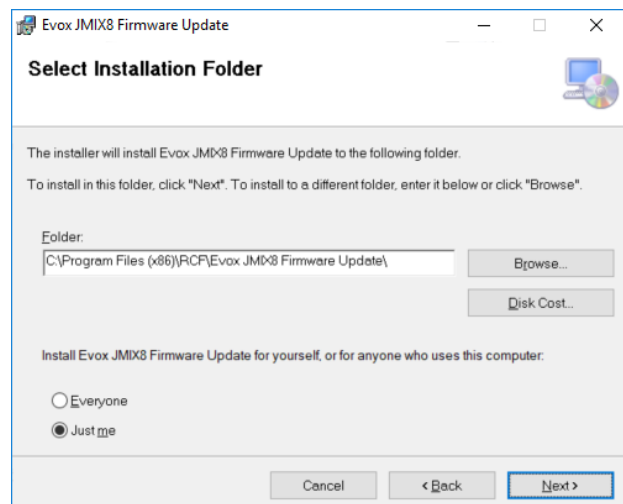
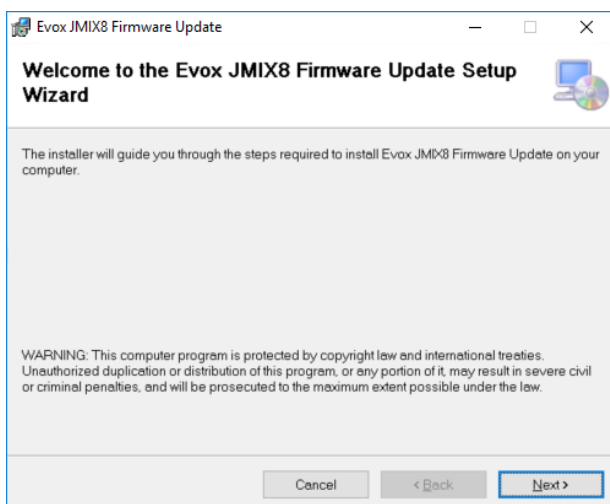
The first step is to download the appropriate files from RCF web site, within the EVOX Jmix8 support page:

- Windows installer: **RCF-EVOX-JMIX8\_Win.zip**
- Mac OS installer: **RCF-EVOX-JMIX8\_Mac.zip**
- EVOX firmware package: **RCF-EVOX-JMIX8-Firmware-xxxx.zip** (where xxx is the firmware version)

## WINDOWS INSTALLATION

*This executable requires Windows 7, 8, or 10*

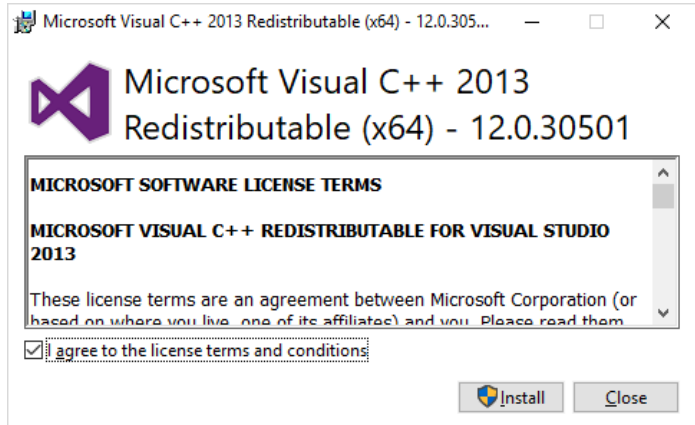
- 1) Unzip the installer file to a temporary folder
- 2) From the temporary folder, click on **Setup.exe** to launch the installation, and follow the on-screen instructions pressing the [Next] button until the installation is completed
- 3) When the installation is completed, press the [Close] button



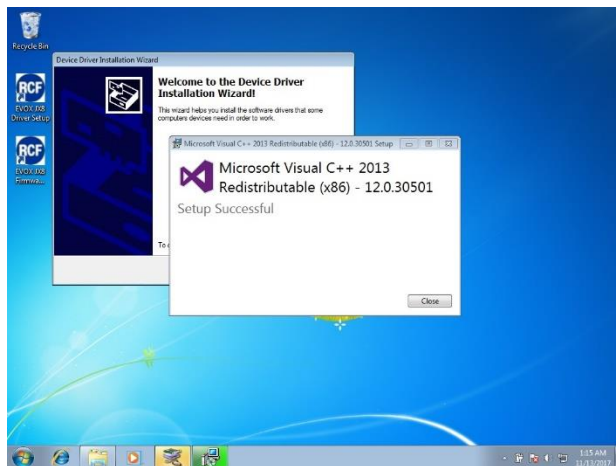
On the desktop of your computer, two icons will appear: “EVOX JMIX8 Driver Setup” and “EVOX JMIX8 Firmware Update”.



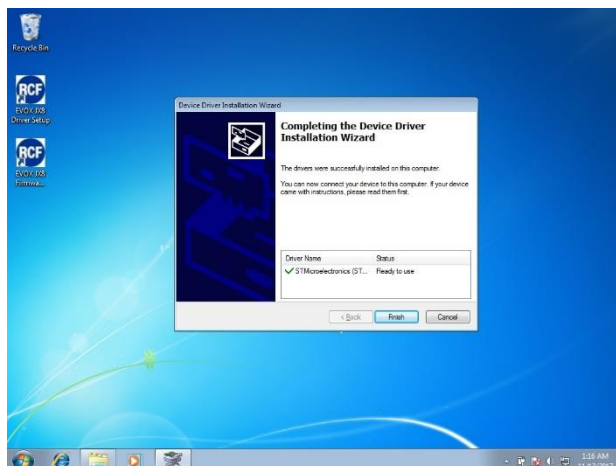
- 4) Click on the icon “EVOX JMIX8 Driver Setup”, agree to the license terms and conditions and then click on the [Install] button.



- 5) When the setup is complete, please press the [Close] button on the topmost window.



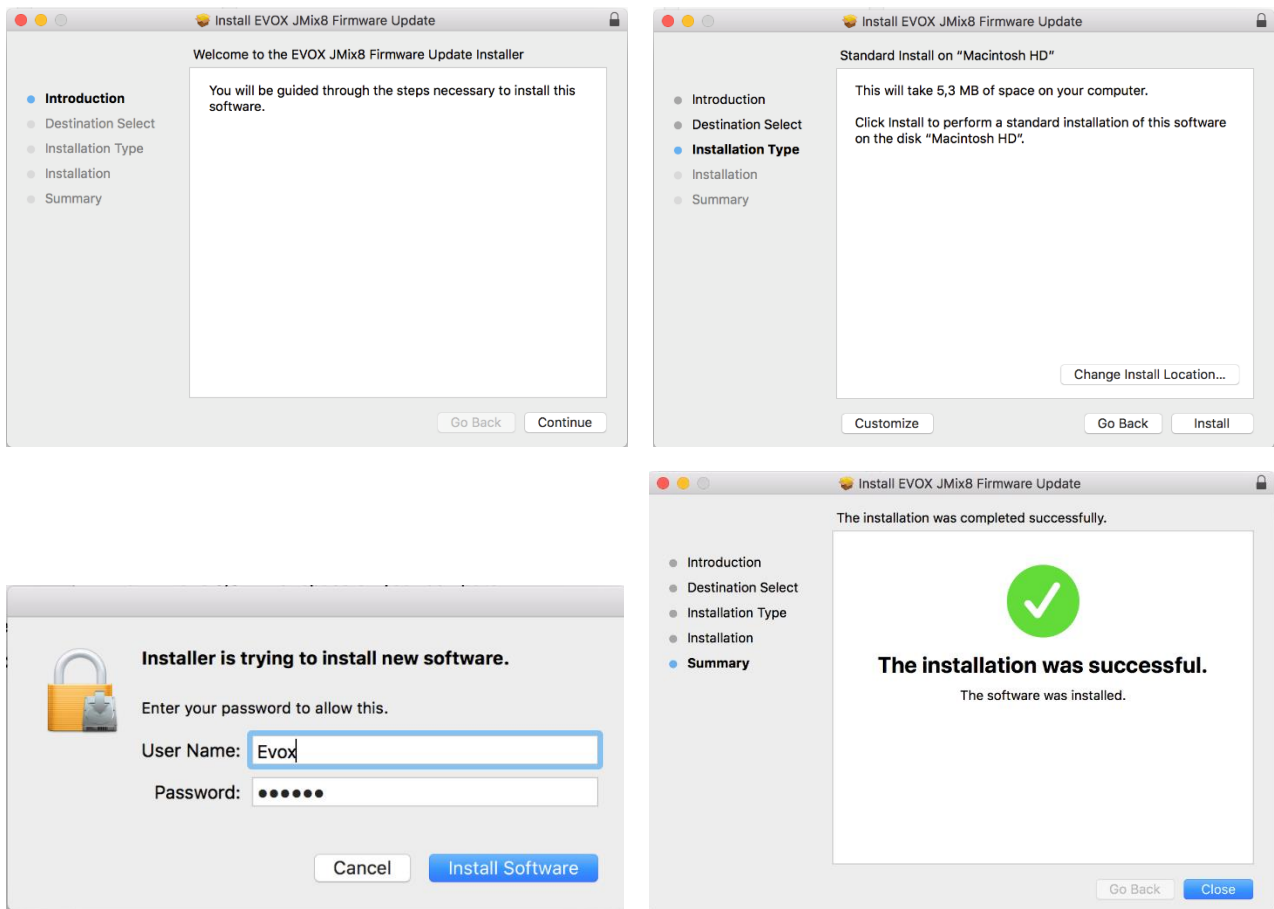
- 6) On the “Device Driver Wizard” window, click on the [Next] button. When the drivers are installed please click on the [Finish] button.



## MAC OS INSTALLATION

*This package type requires Mac OS X 10.5 or higher*

- 1) Unzip the installer file to a temporary folder
- 2) From the temporary folder, click on **EVOX JMix8 Firmware Update.pkg** to launch the installation
- 3) Press the [Continue] button to proceed with the installation and then press the [Install] button.  
*Do not change the settings on the Customize page. For the software to work properly, both items (EvoxUpdate and Libusb) must remain selected*
- 4) Enter the User Name and Password of your Mac to allow the installation
- 5) When the installation is completed, press the [Close] button

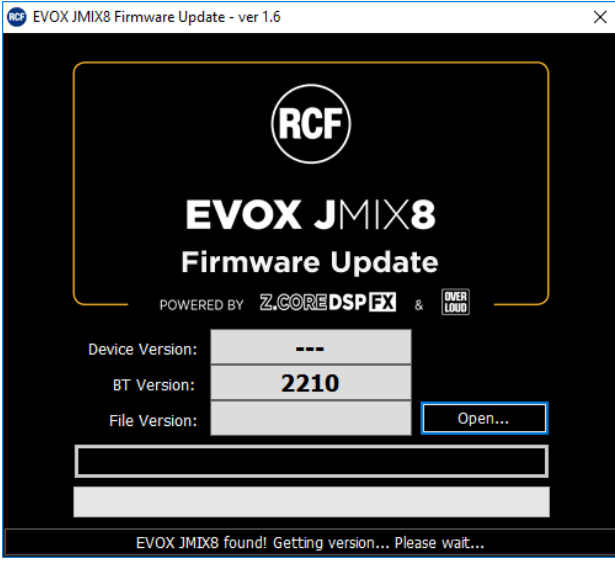
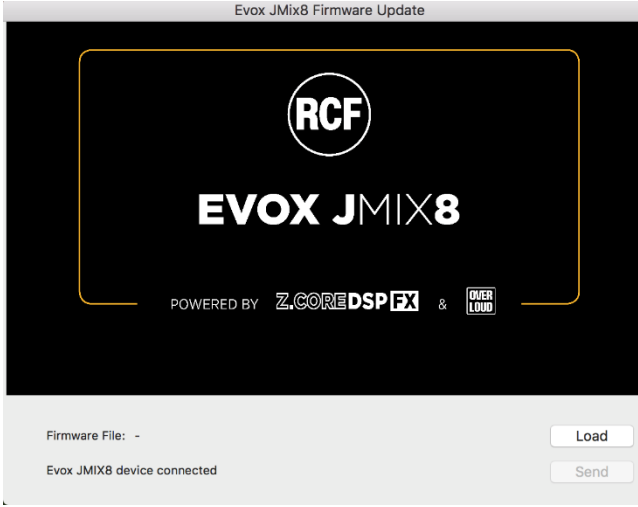
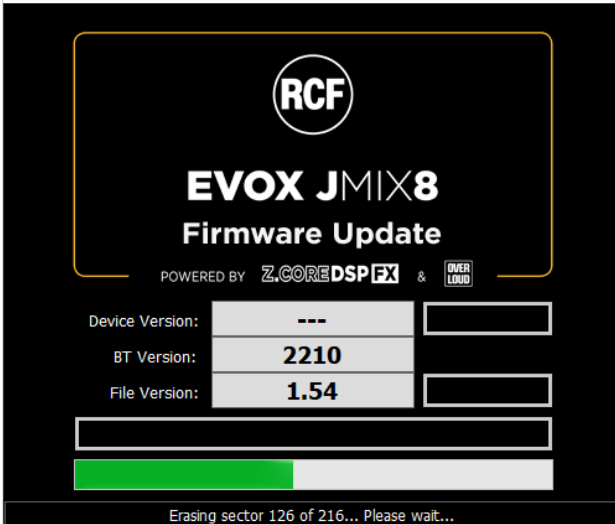
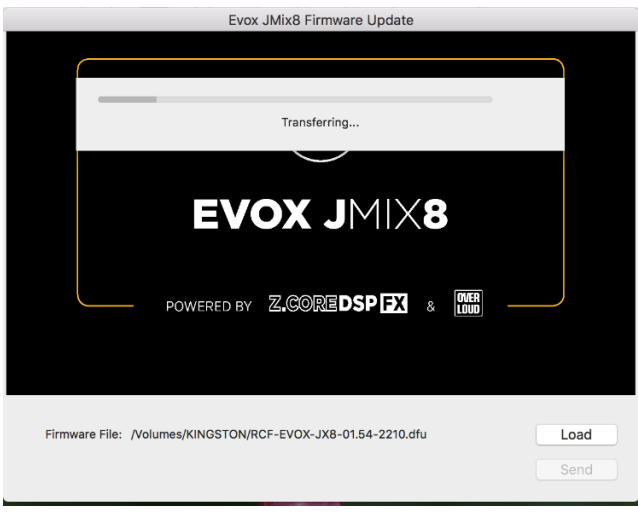


On the Applications of your Mac it will appear "EVOX JMIX8 Firmware Update"

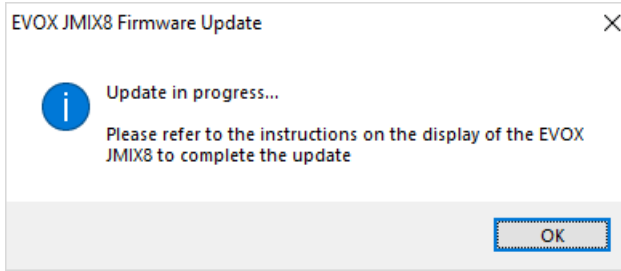
## FIRMWARE UPDATE

The firmware update procedure is composed of two steps: binary files transfer into the unit, and the actual internal rewrite. It is very important to use a stable power supply and that the unit is never unpowered in the middle of this procedure.

Power on the EVOX JMix8; connect EVOX JMix8 to your computer using a USB cable and launch the Update Program.

<p style="text-align: center;"><b>Windows</b></p> <p>[Start] menu &gt; [All Programs] &gt; EVOX JMix8 Firmware Update</p> 	<p style="text-align: center;"><b>Mac OS</b></p> <p>[Application] &gt; EVOX JMix8 Firmware Update</p> 
<p>Unzip the RCF-EVOX-JMix8-Firmware-xxxx.zip into a temporary folder. Open the DFU firmware package and click on the [Program] button.</p>	<p>Unzip the RCF-EVOX-JMix8-Firmware-xxxx.zip into a temporary folder. Load the DFU firmware package and click on the [Send] button.</p>
<p>Unplug and plug again the USB cable, as reported on the dialog box, and click on the [OK] button</p>	<p>Unplug and plug again the USB cable, as reported on the dialog box, and click on the [OK] button</p>
<p>The transfer process begins; wait until the progress bar is complete</p>	<p>The transfer process begins; wait until the progress bar is complete</p>
	

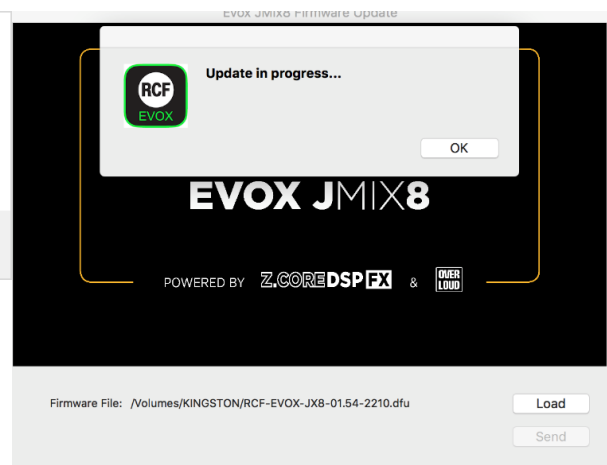
Once the transfer step is completed, the update step begins:



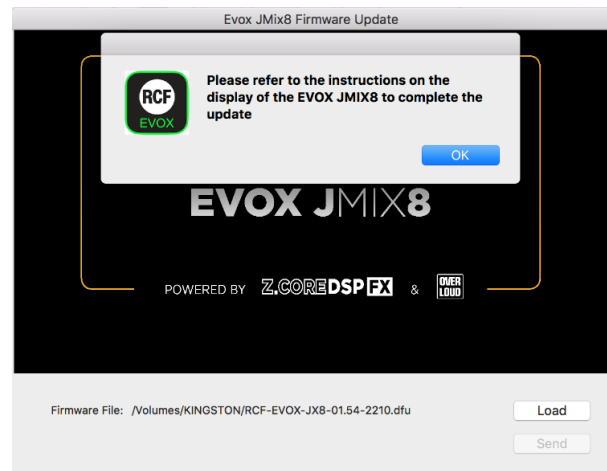
Please click on the [OK] button, and refer to the instructions on the display on the EVOX JMix8 to complete the update and press the OK button



Once the transfer step is completed, the update step begins:



Click on the [OK] button.



Refer to the instructions on the display on the EVOX JMix8 to complete the update and press the OK button



The update is now complete. Please turn off and turn on the EVOX JMix8 as indicated on the on board display and enjoy the new features